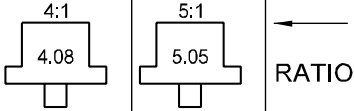


28LB Single Stage Exploded View Drawing

ESKRIDGE MODEL 28LB

SINGLE PLANETARY

EQUIPPED WITH PATENTED "LOAD-N-LOCK"®
SHAFT RETENTION SYSTEM,
(U.S. PATENT NO. 5746517).



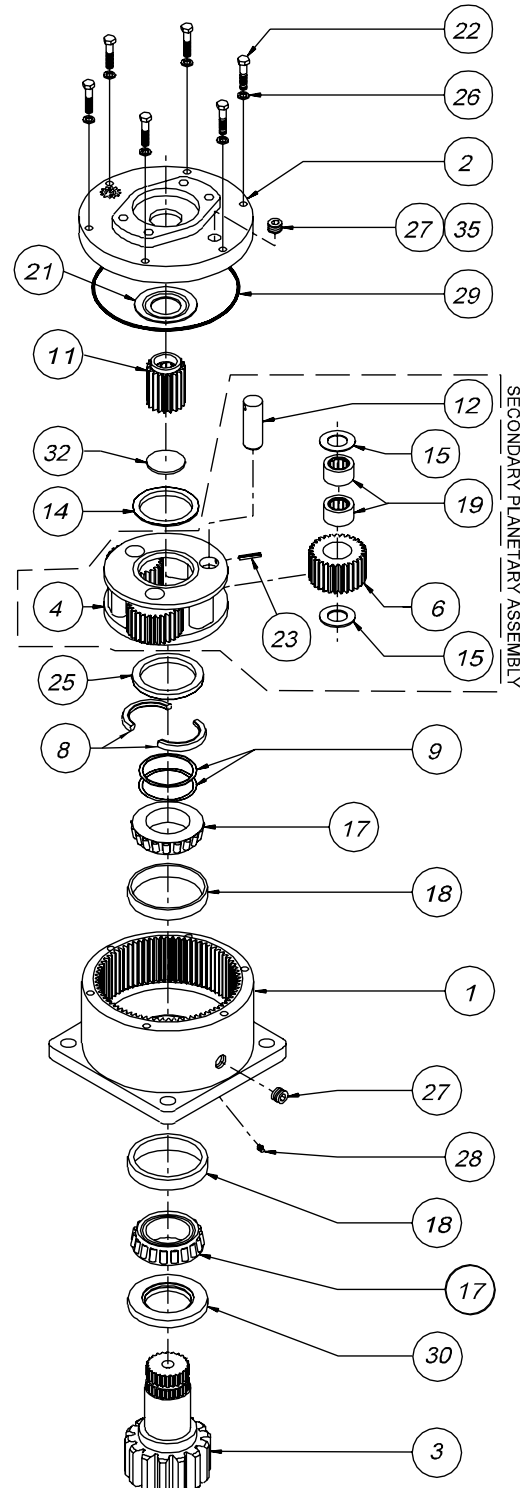
RATIO

EFFECTIVE
FROM: S/N 16401 07-01-93
TO: (CURRENT)

PART NUMBER	PART NUMBER	QTY.	ITEM	C O D E	DESCRIPTION
←	28-004-3504	1	1		B28 CASE-SQUARE- (NO ZERK)
←	28-004-3504Z			B28 CASE-SQUARE- W/ZERK (28)	
-	-			C28 CASE-CUST.MTG PER CUSTOMER SPECS.	
←	85-004-1513	1	2	A	COVER-SAE 'A'
←	85-004-1503			B	COVER-SAE 'B' 2-BOLT
←	28-004-1013			C	COVER-SAE 'C' 4-BOLT
←	20-004-4022L	1	3	D1	2"DIA SHAFT-3/8" KEYWAY
←	20-004-4032L			D2	SHAFT 23T, 12/24 D.P. SPLINE
←	20-004-4042L			D3	2" DIA.SHAFT-1/2"KEYWAY
←	28-004-4202L			D4	2.25"D.SHAFT-1/2"KEYWAY
-	-			C1	SHAFT-CUSTOM PER CUSTOMER SPECS.
←	50-004-1062	1	4		CARRIER-SECONDARY
←	85-004-1051	3	6		PLANET GEAR-SEC.
←	-	-	7		PLANET GEAR-PRI.
←	20-004-1362	1	8		SPLIT RING (MATCHING HALVES)
←	20-004-1091	*	9		SHIM
←	85-004-1552	1	11	1	INPUT GEAR 21T,20/40 D.P.SPLINE
←	85-004-1382			2	INPUT GEAR 13T,16/32 D.P.SPLINE
←	85-004-1272			3	INPUT GEAR SAE 1"-6B SPLINE
←	85-004-1292			4	INPUT GEAR 14T,12/24 D.P.SPLINE
←	85-004-1562			5	INPUT GEAR 15T,16/32 D.P.SPLINE
←	85-004-1592			6	INPUT GEAR 1"DIA X .25" KEY
←	71-004-0121	3	12		PLANET SHAFT-SECONDARY
←	50-004-1011	1	14		THRUST WASHER-SEC.CUP
←	85-004-1181	6	15		THRUST WASHER-(SEC.PLANET GEAR)
←	01-102-0160	2	17		BEARING CONE
←	01-103-0160	2	18		BEARING CUP
←	01-105-0010	6	19		BEARING-SEC.PLANET
←	50-004-1091	1	21		THRUST WASHER-INPUT
←	01-150-1400	6	22		HEX CAPSCREW 5/16-18 X 1.5 GR8
←	01-153-0210	3	23		ROLLPIN-SECONDARY 3/16 X 7/8
←	20-004-1372	1	25		LOCK RING
←	01-166-0110	6	26		LOCKWASHER 5/16 MED
←	01-207-0070	2	27		PIPE PLUG-MAG. 3/8 NPT-SOC HD
←	01-215-0050	(1)	28		GREASE FITTING (OPTIONAL)
←	01-402-0560	1	29		O-RING 167 MM X 3 MM
←	01-405-0550	1	30		SEAL-SHAFT
←	28-004-1021	1	32		THRUST BEARING
←	01-216-0070	(1)	35		AIR VENT 3/8 NPT (OPTIONAL)
-	-	-	-		-

NOTE * BEARING PRELOAD DETERMINES QUANTITY OF SHIMS.

SEAL KIT; P/N 20-016-0501; INCLUDES ITEMS 29 AND 30.



SECONDARY PLANETARY ASSEMBLY