

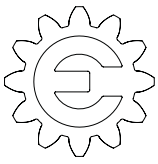
X130LD2IB-AB,

Page 1 of 2

Effective date 10/01/02

Effective serial # 56079

ITEM	QTY	DESCRIPTION	DOUBLE PLANETARY			
			26.52:1 6.00 4.42	33.15:1 7.50 4.42	36.00:1 6.00 6.00	45.00:1 7.50 6.00
BASE	1	A130 - ROUND FLANGE	81-004-0342			
		B130 - SQUARE FLANGE	81-004-0592			
		E130 - RECTANGULAR	81-004-3072			
		F130 - FLANGELESS	81-004-1142			
		C130 - CUSTOM				
OUTPUT SHAFT	2	D1 23 T 8/16 DP SPL 2.25" LG	81-004-1392L			
		D2 3.000" DIA, 5/8" SQ KEY	81-004-0992L			
		D3 23 T 8/16 DP SPL 1.22" LG	81-004-1412L			
		D4 23 T 8/16 DP SPL 2.72" LG	81-004-0942L			
		D5 3.500" DIA, 7/8" SQ KEY	81-004-1152L			
		C1 CUSTOM				
3	1	INTEGRAL BRAKE	(SEE BRAKE EXPLODED DRAWING)			
4	1	INPUT SHAFT 1-6B	13-004-9022	13-004-9062	13-004-9022	13-004-9062
5	(1)	CARRIER ASSEMBLY-SECONDARY	13-005-2001	13-005-2001	13-005-2011	13-005-2011
5A	1	CARRIER (SEC)	13-004-1062	13-004-1062	13-004-1072	13-004-1072
5B	3	PLANET GEAR (SEC)	13-004-1082	13-004-1082	13-004-1092	13-004-1092
5C	3	PLANET SHAFT (SEC)	81-004-0061			
5D	6	BRG - SEC. PL.	01-105-0500			
5E	6	THRUST WASHER - PLANET	81-004-1561			
5F	3	ROLL PIN - SEC. PL. 3/16 X 7/8	01-153-0210			
6	1	SUN GEAR	13-004-1152	13-004-1142	13-004-1152	13-004-1152
	(1)	CARRIER ASSEMBLY-PRIMARY	13-005-2031	13-005-2041	13-005-2031	13-005-2041
7A	1	CARRIER (PRI)	13-004-1042	13-004-1052	13-004-1042	13-004-1052
7B	3	PLANET GEAR (PRI)	13-004-1112	13-004-1122	13-004-1112	13-004-1122
7C	3	PLANET SHAFT (PRI)	13-004-1021			
7D	3	BRG - PRI. PL.	01-105-0590			
7E	6	THRUST WASHER - PLANET	81-004-1561			
7F	3	ROLL PIN - PRI. PL. 1/8 X 7/8	01-153-0180			
12	1	RING GEAR	81-004-2362			
14	2	CARRIER THRUST WASHER	81-004-2711			
16	(1)	SEAL KIT	81-016-2941			
16A	1	SHAFT SEAL -	01-405-0270			
16B	2	O-RING	01-402-0420			
20	---	OUTPUT SHAFT BEARINGS	-----			
20A	1	OUTER CONE	01-102-0020			
20B	1	OUTER CUP	01-103-0020			
20C	1	INNER CONE	01-102-0030			
20D	1	INNER CUP	01-103-0030			
25	---	HARDWARE	-----			
25A	8	BOLTS - COVER	01-150-1670			
25B	8	LOCKWASHERS - COVER	01-166-0010			
25C	16	BOLTS - RING	01-150-1460			
25D	16	HARD WASHERS - RING	01-166-0120			
30	---	PLUGS /GREASE ZERK	-----			
30A	2	PLUG - RING	01-207-0041			
30B	1	1/4 NPT (SOC. HD.)	01-207-0020			
		GREASE FITTING	01-215-0040			
35		MISCELLANEOUS	-----			
35A	*	SHIMS	80-004-1151 (* QUANTITY DETERMINED BY PRELOAD REQUIRED AND PART STACK-UP)			
35B	1	SPLIT RING	81-004-8101			
35C	1	LOCK RING	81-004-8111			



ESKRIDGE

EFFECTIVE FOR:
FROM S/N: 73000 10-01-02
TO: CURRENT

Model 10 Integral Brake

ITEM	QTY	PART NO.	DESCRIPTION
1	1	13-004-9012	CASE - SAE 'A' 2 & 4-BOLT
2	1	(VARIES)	SHAFT (SEE GEARBOX EXPLODED DRAWING)
3	1	13-004-9032	PISTON
4	1	13-004-9042	BACKING PLATE
5	*	01-261-0501	SPRING (3/4 X 1 BLUE)
6	**	01-288-0072	FRICTION DISC (ROTOR)
7	**	01-288-0082	SEPARATOR PLATE (STATOR)
8	1	01-160-0670	RETAINING RING
9	1	01-112-0230	THRUST WASHER
10	1	01-400-0220	BACKUP RING
11	1	01-400-0260	BACKUP RING
12	1	01-402-0690	O-RING
13	1	01-402-0830	O-RING
14	2	01-208-0020	PLUG (SAE #4)
15	1	01-208-0070	PLUG (SAE #6)

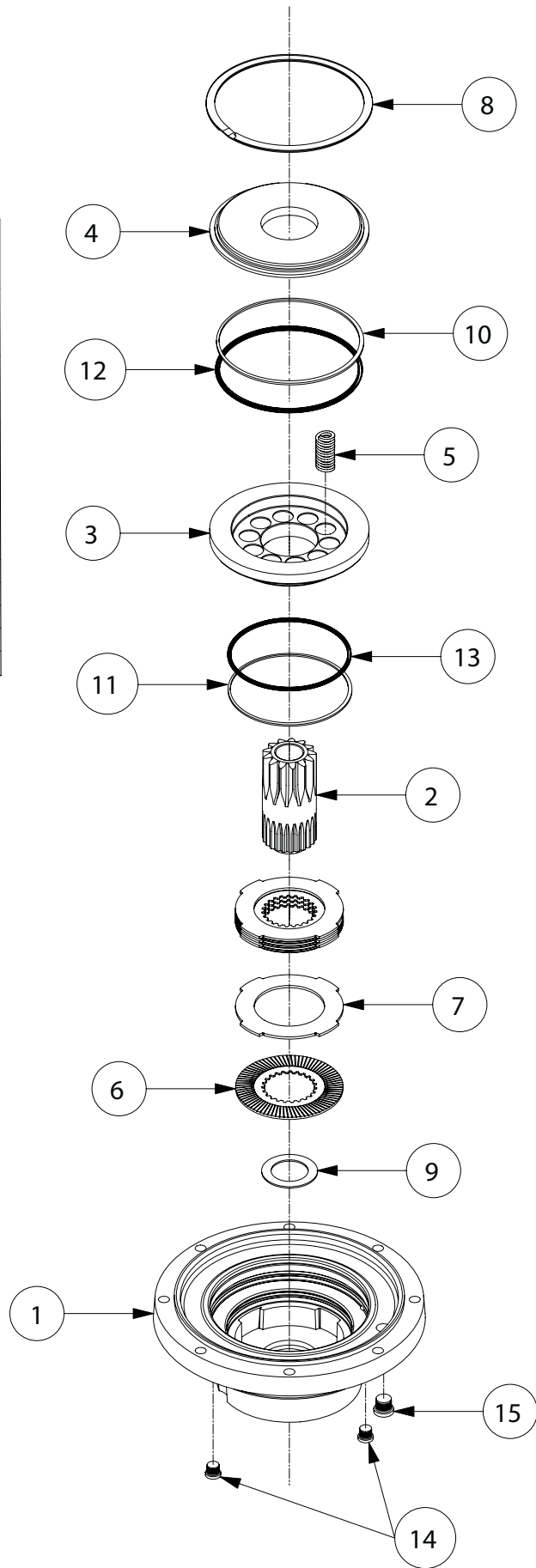
NOTES:

- * 1. QTY OF SPRINGS MUST BE 2,4,5,6,8 OR 10 AS DETERMINED BY SPECIFIC BRAKE REQUIREMENTS.
- ** 2. TOTAL QTY OF FRICTION DISCS (ITEM 6) AND SEPARATORS (ITEM 7) MUST EQUAL 8. FULL COMPLEMENT BRAKE INCLUDES 4 FRICTION DISCS (ITEM 6) AND 4 SEPARATORS (ITEM 7).

OPTIONS:

- 1. SEAL KIT, P/N 95-016-2541 (INCLUDES 1 EACH, ITEMS 10,11,12,13)
- 2. FRICTION DISC KIT 95-016-2551 (INCLUDES 4 EACH ITEM 6)
- 3. SEPARATOR PLATE KIT 95-016-2561 (INCLUDES 4 EACH ITEM 7)

>>> NOTE THAT BRAKE IS SHOWN INVERTED (UPSIDE-DOWN) RELATIVE TO EXPLODED DRAWING OF PLANETARY GEARDRIVE.



X10IB-AA ECN ----- 12-13-02