

# 250L Double Stage Exploded View Drawing

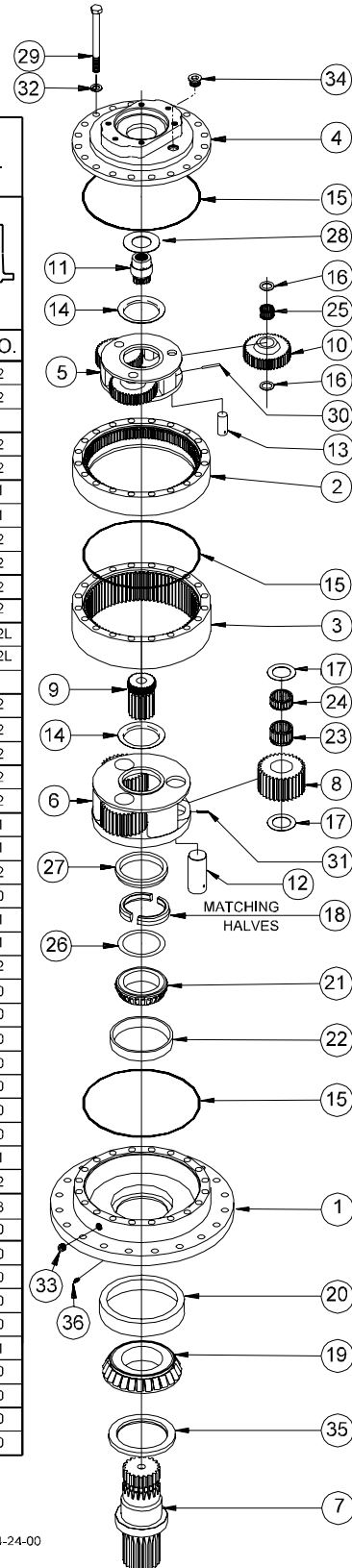


**ESKRIDGE**

**MODEL 250L**

EQUIPPED WITH PATENTED "LOAD-N-LOCK"®  
SHAFT RETENTION SYSTEM. (U.S. PATENT NO. 5746517).

ITEM	QTY	RATIO →	RATIO					
			20.25:1	25.88:1	29.58:1	37.80:1	40.25:1	51.43:1
EFFECTIVE: FROM: S/N 28500 01/01/97 TO: CURRENT			4.3125:1 4.6957:1	4.3125:1 6.00:1	6.30:1 4.6957:1	6.30:1 6.00:1	8.5714:1 4.6957:1	8.5714:1 6.00:1
DESCRIPTION			PART NO.	PART NO.	PART NO.	PART NO.	PART NO.	PART NO.
1	1	250A BASE - ROUND	25-004-3042	25-004-3042	25-004-3042	25-004-3042	25-004-3042	25-004-3042
		250F BASE - FLANGELESS	25-004-3052	25-004-3052	25-004-3052	25-004-3052	25-004-3052	25-004-3052
		CUSTOM BASE	-	-	-	-	-	-
2	1	RING GEAR - PRIMARY	25-004-1012	25-004-1012	25-004-1012	25-004-1012	25-004-1012	25-004-1012
3	1	RING GEAR - SECONDARY	25-004-1022	25-004-1022	25-004-1022	25-004-1022	25-004-1022	25-004-1022
4	1	A - SAE 'A' COVER	25-005-2061	25-005-2061	25-005-2061	25-005-2061	25-005-2061	25-005-2061
		B - SAE 'B' COVER	25-005-2051	25-005-2051	25-005-2051	25-005-2051	25-005-2051	25-005-2051
		C - SAE 'C' (2 AND 4 BOLT)	25-004-1222	25-004-1222	25-004-1222	25-004-1222	25-004-1222	25-004-1222
		D - SAE 'D' COVER	25-004-1232	25-004-1232	25-004-1232	25-004-1232	25-004-1232	25-004-1232
5	1	CARRIER - PRIMARY	25-004-1052	25-004-1052	25-004-1042	25-004-1042	25-004-1032	25-004-1032
6	1	CARRIER - SECONDARY	25-004-1072	25-004-1062	25-004-1072	25-004-1062	25-004-1072	25-004-1062
7	1	D1 - OUTPUT SHAFT 20T 6/12 SPLINE	25-004-4032L	25-004-4032L	25-004-4032L	25-004-4032L	25-004-4032L	25-004-4032L
		D2 - OUTPUT SHAFT 3.75" DIA, KEYED	25-004-4042L	25-004-4042L	25-004-4042L	25-004-4042L	25-004-4042L	25-004-4042L
		C1 - OUTPUT SHAFT - CUSTOM	-	-	-	-	-	-
8	3	PLANET GEAR - SECONDARY	25-004-1092	25-004-1082	25-004-1092	25-004-1082	25-004-1092	25-004-1082
9	1	SUN GEAR - SECONDARY	25-004-1152	25-004-1142	25-004-1152	25-004-1142	25-004-1152	25-004-1142
10	3	PLANET GEAR - PRIMARY	25-004-1122	25-004-1122	25-004-1112	25-004-1112	25-004-1102	25-004-1102
11	1	INPUT GEAR INPUT 14T SPL	25-004-1202	25-004-1202	25-004-1172	25-004-1172	25-004-1162	25-004-1162
		INPUT GEAR INPUT 13T SPL	25-004-1292	25-004-1292	25-004-1282	25-004-1282	25-004-1272	25-004-1272
12	3	PLANET SHAFT - SECONDARY	25-004-1021	25-004-1021	25-004-1021	25-004-1021	25-004-1021	25-004-1021
13	3	PLANET SHAFT - PRIMARY	25-004-1031	25-004-1031	25-004-1031	25-004-1031	25-004-1031	25-004-1031
14	2	THRUST WASHER - CARRIER	25-004-1132	25-004-1132	25-004-1132	25-004-1132	25-004-1132	25-004-1132
15	3	SEAL (O-RING)	01-402-0020	01-402-0020	01-402-0020	01-402-0020	01-402-0020	01-402-0020
16	6	THRUST WASHER - PRI, PLANET	81-004-1561	81-004-1561	81-004-1561	81-004-1561	81-004-1561	81-004-1561
17	6	THRUST WASHER - SEC. PLANET	25-004-1041	25-004-1041	25-004-1041	25-004-1041	25-004-1041	25-004-1041
18	1	SPLIT RING - LOAD-N-LOCK	25-004-1182	25-004-1182	25-004-1182	25-004-1182	25-004-1182	25-004-1182
19	1	BEARING CONE - OUTER	01-102-0120	01-102-0120	01-102-0120	01-102-0120	01-102-0120	01-102-0120
20	1	BEARING CUP - OUTER	01-103-0110	01-103-0110	01-103-0110	01-103-0110	01-103-0110	01-103-0110
21	1	BEARING CONE - INNER	01-102-0250	01-102-0250	01-102-0250	01-102-0250	01-102-0250	01-102-0250
22	1	BEARING CUP - INNER	01-103-0250	01-103-0250	01-103-0250	01-103-0250	01-103-0250	01-103-0250
23	3	BEARING - SEC PLANET GEAR	01-105-0550	01-105-0550	01-105-0550	01-105-0550	01-105-0550	01-105-0550
24	3	BEARING - SEC PLANET GEAR	01-105-0560	01-105-0560	01-105-0560	01-105-0560	01-105-0560	01-105-0560
25	3	BEARING - PRI PLANET GEAR	01-105-0570	01-105-0570	01-105-0570	01-105-0570	01-105-0570	01-105-0570
26	*	SHIM - SHAFT ADJUSTMENT	25-004-1051	25-004-1051	25-004-1051	25-004-1051	25-004-1051	25-004-1051
27	1	LOCK RING - LOAD-N-LOCK	25-004-1192	25-004-1192	25-004-1192	25-004-1192	25-004-1192	25-004-1192
28	1	THRUST WASHER - INPUT GEAR	81-004-2883	81-004-2883	81-004-2883	81-004-2883	81-004-2883	81-004-2883
		THRUST WASHER - F/U/W/ 13T 8/16 INPUT	01-112-0030	01-112-0030	01-112-0030	01-112-0030	01-112-0030	01-112-0030
29	20	HEX HEAD CAPSCREW (5/8-11 X 7) GR 8	01-150-1630	01-150-1630	01-150-1630	01-150-1630	01-150-1630	01-150-1630
30	3	ROLL PIN (3/16 X 1)	01-153-0020	01-153-0020	01-153-0020	01-153-0020	01-153-0020	01-153-0020
31	3	ROLL PIN (3/16 X 1 1/4)	01-153-0190	01-153-0190	01-153-0190	01-153-0190	01-153-0190	01-153-0190
32	20	LOCKWASHER - (5/8)	01-166-0040	01-166-0040	01-166-0040	01-166-0040	01-166-0040	01-166-0040
33	1	PIPE PLUG (1/2 NPT MAGNETIC) - BASE	01-207-0041	01-207-0041	01-207-0041	01-207-0041	01-207-0041	01-207-0041
34	1	PLUG - COVER	01-208-0030	01-208-0030	01-208-0030	01-208-0030	01-208-0030	01-208-0030
35	1	SHAFT SEAL	01-405-0500	01-405-0500	01-405-0500	01-405-0500	01-405-0500	01-405-0500
36	1	PLUG 1/4 NPT	01-207-0020	01-207-0020	01-207-0020	01-207-0020	01-207-0020	01-207-0020
		GREASE FITTING (OPTIONAL)	01-215-0040	01-215-0040	01-215-0040	01-215-0040	01-215-0040	01-215-0040



▶ FOR 13T, 8/16 INPUT SPLINE, USE P/N 01-112-0030 THRUST WASHER. (USE ONLY WITH 'D' COVER).

\* QUANTITY OF SHIMS DETERMINED BY BEARING PRELOAD.

OPTIONS SEAL KIT P/N 25-016-2021  
INCLUDES 1 EA. OF ITEMS 35  
AND A QTY 3 OF ITEM 15

E.C.N. 1803  
X250LD2-AB DATE: 4-24-00