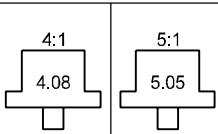


# RATIO'S



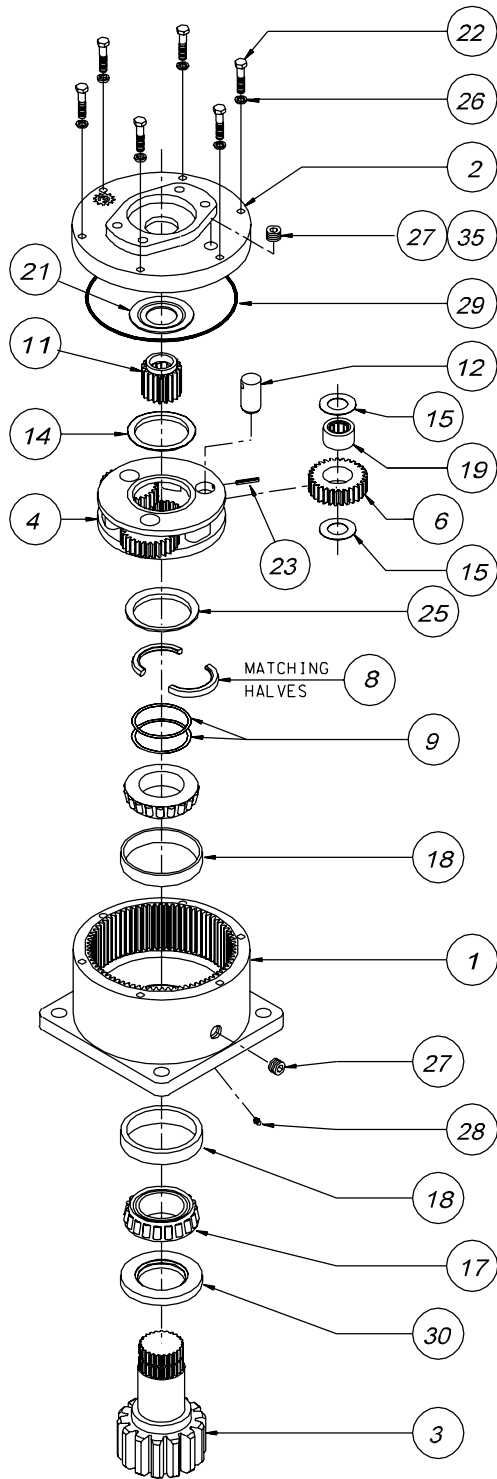
# MODEL B20L

SINGLE PLANETARY



EFFECTIVE  
FROM: S/N 16401 07-01-93  
TO: (CURRENT)

PART NUMBER	PART NUMBER	QTY.	ITEM	C O D E	DESCRIPTION
←	20-004-3024	1	1		B20 CASE-SQUARE- (NO ZERK)
←	20-004-3024Z				B20 CASE-SQUARE- WZERK
-	-				CB20 CASE-CUSTOM PER CUSTOMER SPECS.
←	85-004-1513			A	COVER-SAE 'A'
←	85-004-1503	1	2	B	COVER-SAE 'B' 2-BOLT
←	28-004-1013			C	COVER-SAE 'C' 4-BOLT
←	20-004-4022L			D1	2" DIA SHAFT-3/8" KEYWAY
←	20-004-4032L			D2	SHAFT 23T, 16/32 D.P. SPLINE
←	20-004-4042L	1	3	D3	2" DIA. SHAFT-1/2" KEYWAY
←	28-004-4202L			D4	2.25"D. SHAFT-1/2" KEYWAY
-	-			C1	SHAFT-CUSTOM PER CUSTOMER SPECS.
←	20-004-1282	1	4		CARRIER-SECONDARY
←	20-004-1041	3	6		PLANET GEAR-SEC.
←	20-004-1362	1	8		SPLIT RING (MATCHING HALVES)
←	20-004-1091	*	9		SHIM
←	20-004-1302	N/A		1	INPUT GEAR 21T, 20/40 D.P. SPLINE
←	20-004-1122	2		2	INPUT GEAR 13T, 16/32 D.P. SPLINE
←	20-004-1102	3		3	INPUT GEAR SAE 1"-6B SPLINE
←	20-004-1192	N/A		4	INPUT GEAR 14T, 12/24 D.P. SPLINE
←	20-004-1322	5		5	INPUT GEAR 15T, 16/32 D.P. SPLINE
←	20-004-1142	6		6	INPUT GEAR 1" DIA X .25" KEY
←	20-004-1081	3	12		PLANET SHAFT-SECONDARY
←	50-004-1011	1	14		THRUST WASHER-SEC. CUP
←	85-004-1181	6	15		THRUST WASHER - (SEC. PLANET GEAR)
←	01-102-0160	2	17		BEARING CONE
←	01-103-0160	2	18		BEARING CUP
←	01-105-0010	3	19		BEARING-SEC. PLANET
←	50-004-1091	1	21		THRUST WASHER-INPUT
←	01-150-1400	6	22		HEX CAPSCREW 5/16-18 X 1.5, GR8
←	01-153-0210	3	23		ROLLPIN-SECONDARY 3/16 X 7/8
←	20-004-1372	1	25		LOCK RING
←	01-166-0110	6	26		LOCKWASHER 5/16 MED
←	01-207-0070	2	27		PIPE PLUG-MAG. 3/8 NPT-SOC HD
←	01-215-0050	(1)	28		GREASE FITTING (OPTIONAL)
←	01-402-0560	1	29		O-RING 167 MM X 3 MM
←	01-405-0550	1	30		SEAL-SHAFT
←	01-216-0070	(1)	35		AIR VENT 3/8 NPT (OPTIONAL)
-	-	-	-		-



NOTE \* BEARING PRELOAD DETERMINES QUANTITY OF SHIMS.  
SEAL KIT; P/N 20-016-0501; INCLUDES ITEMS 29 AND 30.